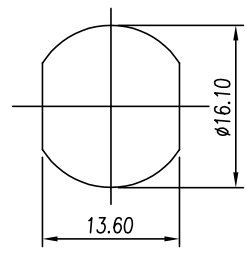
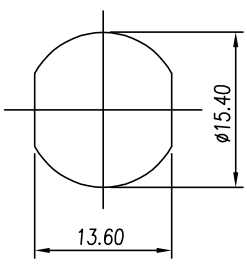
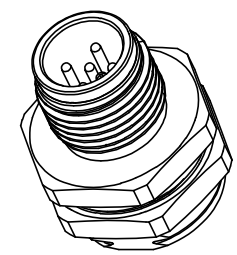


REV	ECN	SIGN	DATE	DESCRIPTION
1.1	V1	K. ZHAO	2024/12/27	Drawing update parameters



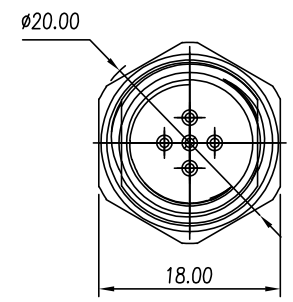
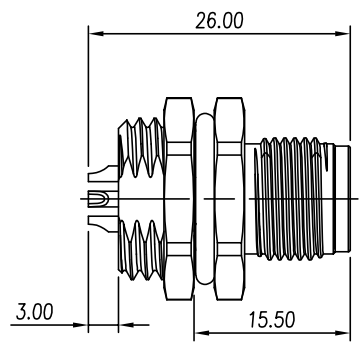
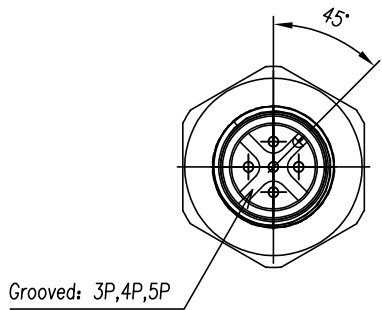
PG9: 5SD-M12A-XXP-MM-SH7000-00AH
M16*1.5: 5SD-M12A-XXP-MM-SH7001-00AH

Installation shell opening: maximum thickness 4.5mm,
Installation torque 1.25Nm



Technical Parameter:

1. Insulation Resistance: $\geq 100M\Omega$
2. Contact Resistance: $\leq 10m\Omega$
3. Durability: ≥ 100 cycles
4. Locking Torque: 0.4Nm
5. Compliant with RoHS
6. Protection Level: IP68
(1 meter water depth, 24 hours); IP69K
7. Temperature Range: $-25^{\circ}C \sim 85^{\circ}C$



5SD-M12A - XXP - MM-SH7001 - 00AH
Coding: A,B,D Poles Thread type: 000: PG9 001: M16*1.5
Standard

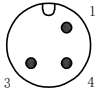
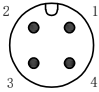
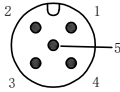
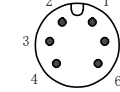
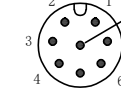
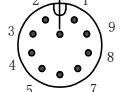
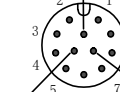
variable range	linear dimension							≡	—	□	//	⊥
	to 10	over 18 to 30	over 30 to 50	over 50 to 80	over 80 to 120	over 120 to 160	over 160 to 200					
tolerance	±0.15	±0.25	±0.35	±0.45	±0.60	±0.75	±0.90	0.5	0.025	0.06	0.12	0.4

Remark: This drawing is a controlled document for Cymanu. All specifications are subject to change without prior notice.




 SIZE: A4	 SCALE: 4 : 3	DRAWN: K. ZHAO CHECKED: T. Pan APPROVED: H. JIANG	DATE: 08/10/2021 DATE: 08/10/2021 DATE: 08/10/2021	PART NO: 5SD-M12A-XXP-MM-SH7001-00AH TITLE: M12A, Male, front-end installation	 Cymanu 賜宇電子 NINGBO CHANGYU ELECTRONICS MANUFACTURING CO., LTD Email: sales@cymanu.com WWW.CYMANU.COM
---------------------	-------------------------	--	---	---	--

REV	ECN	SIGN	DATE	DESCRIPTION
1.1	V1	K. ZHAO	2024/12/27	Drawing update parameters

Remarks: Pollution Level (3)/Overvoltage Category (II)/Material Group (I)

Number of Positions	3P	4P	5P	6P	8P	10P	12P
Coding							
Current/Voltage	4A/250V	4A/250V	4A/60V	2A/30V	2A/30V	1.5A/30V	1.5A/30V
Voltage Proof	1.4kV	1.4kV	1.0kV	0.65kV	0.65kV	0.5kV	0.5kV
Rated Impulse Voltage	2.5kV	2.5kV	1.5kV	0.8kV	0.8kV	0.8kV	0.8kV

Remark: This drawing is a controlled document for Cymanu. All specifications are subject to change without prior notice.

		DRAWN: K. ZHAO	DATE: 08/10/2021	PART NO: 5SD-M12A-XXP-MM-SH7001-00AH	 NINGBO CHANGYU ELECTRONICS MANUFACTURING CO., LTD Email: sales@cymanu.com WWW.CYMANU.COM
SIZE: A4	SCALE: 4 : 3	CHECKED: T. Pan	DATE: 08/10/2021	TITLE: M12A, Male, front-end installation	
UNIT: mm	SHEET: 2 / 2	APPROVED: H. JIANG	DATE: 08/10/2021	CUSTOMER:	