

Pin Assignments

REV	ECN	SIGN	DATE	DESCRIPTION
1.0	V0	K. ZHAO	10/21/2021	/

NOTES:

1. RoHS Compliant
 2. Levels of protection: IP67
 3. Installation mode: Solder, Back Fastened
 4. Operating temperature: -40°C~105°C
 5. Applicable Panel: Panel Hole
- For Panel Thickness Max: 4.5mm

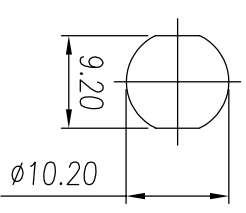
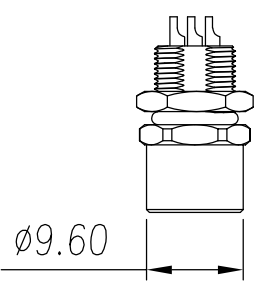
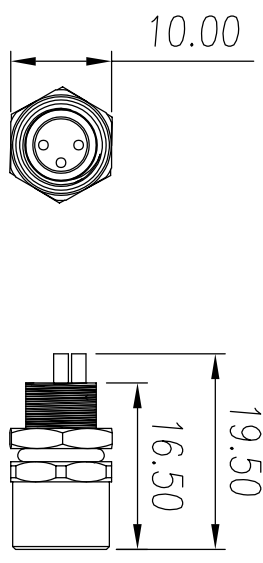
		linear dimension										≡	□	//	⊥
variable range	to	over 18	over 30	over 50	over 80	over 120	over 160	over 160	all	to 5	over 5	over 30	over 120	to	to
	10	to 30	to 50	to 80	to 120	to 160			5	to 30	to 120				
tolerance	±0.15	±0.25	±0.35	±0.55	±0.80	±1.05	±1.30	0.5	0.025	0.06	0.12	0.4			

S5D-M8A - XXP - FF-SH7000 - 00AH

Standard

Coding: A,B

Poles



Panel Hole

Remark: This drawing is a controlled document for Cymann. All specifications are subject to change without prior notice.

SIZE: A4	SCALE: 4 : 3	DRAWN: K. ZHAO	DATE: 10/21/2021	PART NO.: S5D-M8A-XXP-FF-SH7000-00AH	<p>NINGBO CHANGTU ELECTRONICS MANUFACTURING CO., LTD Email: sales@cymannu.com WWW.CYMANNU.COM</p>
UNIT: mm	SHEET: 1 / 1	CHECKED: C. LU	DATE: 10/21/2021	TITLE: M8A female, Back Fastened Socket	